



MY FARM

Volume 5

JUL 2023

COMBINE RACE 2023

Class 6 and Class 8 articles about New Holland, Case IH, John Deere and Massey Ferguson's participation

*The Nail-Biting
Class 6 Race*

*Class 8
Time for the big dogs!*



Photo credit: Swart Kat Productions

CONTENTS

- 3 Foreword
- 11 Excitement for Grootpan

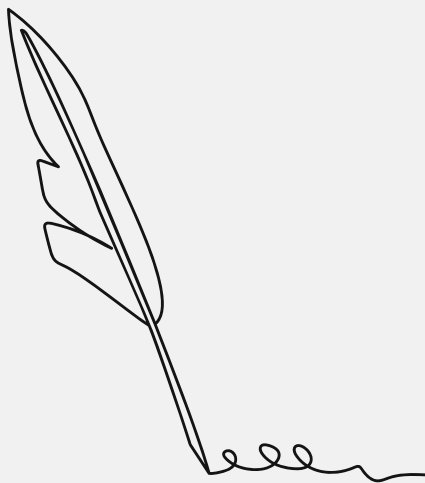
- 13 A nail biting Class 6 Combine Race
- 16 Maximising harvest efficiency with the New Holland CR6.80
- 18 The comfort of Massey Ferguson 9695.
- 20 A new way for a cleaner harvest with Case IH 6150
- 22 New technology John Deere S760
- 24 Sakeliga Kragdag 2023

Class 6

- 27 Time for the big dogs!
- 30 New Holland CR 7.90
- 32 Case IH believes a big one is better than two small ones
- 34 Fendt IDEAL 8
- 35 A machine with a big heart - John Deere
- 37 Threshing drum or rotor or both
Claas 7600
- 40 5 Alternate uses for your leaf blower
- 43 Mitigating dust risks in farming
- 46 Auctions and events

Class 8

FOREWORD



E

stablishing our new MyFarm agricultural magazine was an enormous project that was equally as daunting as it was exciting—and as the team continues to build our initial successes, it still is. The thrill of delivering

fresh, new, and out-of-the-box content is something that the MyFarm team approaches month after month with great enthusiasm, regardless of the challenges and uncertainties that sometimes accompany it. The hours and hours of planning, merging, and editing to bring quality information to our readers is a privilege that pushes all doubts and fears about the magnitude of such a massive project into the background. Just like a farmer faithfully sowing with the unwavering belief that he will successfully harvest, we as the MyFarm team are full of that same faith that our magazine will not only grow rapidly but become a valuable part of every farmer's household. We dream big, aim high, and we will continue to provide useful, interesting, and practical reading material to all our loyal readers.

In this edition, we have the privilege of focusing on the Grootpan Harvester Race that took place on July 2nd, 2023. This unique event provided farmers with the opportunity to witness the latest Harvesters on the market in action and compare them with one another. We bring you the race results, technical data, and the full experience of this highly successful and fun-filled day!

Without you—our readers—and your sustained support and contribution, MyFarm would never have come to light. With gratitude to all of you and a bright hope for the future of our magazine, there is only one thing left to say... happy reading!

VOICE OF THE FARMER

National Boran Auction



15 JULY 2023

AFRIDOME • PARYS • 11H00

BORAN AGM 14 JULY 2023 @ 13H00 • AFRIDOME • PARYS

✉ boran@boran.org.za

🌐 www.boran.org.za

☎ +27 (0) 51 410 0951

☎ Christopher Havenga (Technical Advisor): 082 821 1527

☎ Ian Grobbelaar (Vleissentraal): 060 965 6207

God's gift to cattlemen!



BORAN CATTLE
BREEDERS' SOCIETY
OF SOUTH AFRICA



FARMSPACE

MEERKAT
ONLINE AUCTIONS



Excelsior | Lot 2 | JF 19-6



Bosbokrand | Lot 3 | EED 20-4



Marones | Lot 6 | JH 17-120



Ooskus | Lot 10 | GE 20-35



Hessi | Lot 18 | BS 21-5



Gerben | Lot 19 | BG 20-86



NATIONAL

Auction

20 Years of
Boran Magic!

15 July 2023

Kwanare | Lot 21 | KW 20-518



Bothasberg | Lot 23 | BAS 20-324



Mountain View | Lot 25 | BS 21-7



Langfontein | Lot 27 | LD 20-45



Jabea | Lot 33 | WS 19-65



Duikerbosch | Lot 35 | BCL 17-6



Coco | Lot 39 | YF 18-91



SIRRS | Lot 40 | SRS 20-14



Brooks | Lot 41 | LJB 16-36



Groenland | Lot 44 | GLB 17-6



Olifantsklip | Lot 46 | CP 20-31



Drostdy | Lot 47 | DBC 19-1



JB | Lot 50 | JBB 20-59



Yatta | Lot 54 | ABW 20-94



Fonteine | Lot 59 | JT 16-198



Bontran | Lot 66 | BTR 20-2



BIT | Lot 67 | OBA 20-12



Bosbokrand | Lot 70 | EED 20-3



Marones | Lot 72 | JH 17-53



Ooskus | Lot 76 | GE 21-6



Hessi | Lot 84 | HJ 20-20



Kwanare | Lot 87 | KW 20-530



Bothasberg | Lot 89 | BAS 18-201



Mountain View | Lot 91 | BS 20-36



Jabea | Lot 96 | WS 19-103



Savanna | Lot 99 | BMK 20-30



SIRRS | Lot 100 | SRS 20-8



Groenland | Lot 103 | GLB 20-1



Olifantsklip | Lot 105 | CP 20-26



Drostdy | Lot 106 | DBC 19-62



Yatta | Lot 113 | W 15-1121



Fonteine | Lot 116 | FN 19-48





BORAN

*20 Years of
Boran Magic!*

PHOTOS AND CATALOGUE
DESIGNED BY



EXCITEMENT FOR GROOTPAN

By: Lizelle Fourie

20 years ago, Kobus and Andre du Preez from Grootpan decided to finally find out who had the best harvester. Andre had a Case harvester, and Kobus a John Deere harvester. Friends and family were invited to attend the “wen-akker-braai” and watch the two brothers compete. Thus, the harvester race grew to where it is today, with farmers in the area considering it a “small Nampo”.

While the day still has the race as a focus point, the day has grown into an informative day where farmers can come and see new technology available in implements and machinery through demonstrations. The day also offers the opportunity for suppliers to get in touch with the farmer. There is entertainment for the whole family with delicious food and a nice place to socialize.

This year, the harvester race boasted harvesters from New Holland, Case, Massey Ferguson, John Deere, Claas and Fendt, while the grain cart race boasted names such as JWL Agriculture, Feeler, BPI, Van Zyl Steelworks, JBH Agri and Cerealis.

The goal of the Grootpan Study Group is to bring farmers in the area together amidst the hustle and bustle of life, with a focus on farming, and has used it to bring farmers and the community closer together. The Grootpan Study Group consists of 22 farming units and gives companies the platform to introduce their product, test and/or demonstrate. It offers the perfect opportunity for various companies to not only get in touch with farmers in the community but also as the perfect platform for marketing.

The Grootpan study group has been involved in the harvester race for almost a decade in collaboration with Du Preez Estate. The race takes place in Grootpan, between Lichtenburg and Koster, North West, on Du Preez Estate. The day is unique in South Africa.



Photo credit: Swart Kat Productions

Although the day is already a success, it gives hope for farmers, the community and industry.

The farmers in the community each produce something different, from chickens to cattle, seed and vegetables. The red soil and good underground water reservoirs make the area unique for farming, but the farmers share that it is so much more that makes the area unique. Community and unity are the pillars of support for Grootpan.



On Top OF IT ALL

PRODUKSIEVEILING

20 JULIE 2023

PAARDEFONTEIN, STANDERTON

AANBOD: 20 Bulle | 30 SP Koeie | 200 Kommersieel

SHM **MEEKAT**
ONLINE AUCTIONS

Johann Pistorius 083 630 8090 | Gareth Hughes 071 130 5613
Johan van der Nest 082 574 4220

THE HARE AND THE TORTOISE

A NAIL-BITING CLASS 6 COMBINE RACE



Photo credit: Swart Kat Productions

ANDRÉ GROENEWALD
FARMSPACE (DIRECTOR)

As the Class 6 division of the 2023 Combine Race unfolds, the level of competition escalates to a gripping fever pitch. The race's roster boasts four heavyweight competitors: the Massey Ferguson 9695, the Case IH 6150, the New Holland CR 6.80, and the John Deere S 760, each brandishing their unique technological strengths.

Kicking off the competitor line-up is the Massey Ferguson 9695, which is uniquely outfitted with a horizontally-mounted single rotor. This horizontal design, bestowing the machine with a distinct advantage. Its in-line engine configuration minimizes power losses, a testament to engineering ingenuity that effectively maximizes machine efficiency.

Not to be outdone, the Case IH 6150 upholds its long-standing tradition with its iconic Axial-Flow single rotor setup. This tried-and-true technology, which has served the farming community for decades, firmly entrenches Case IH in the annals of agricultural innovation.

Adding to the competitive heat, the New Holland CR 6.80 enters the fray with its twin rotor setup, a technology that has proved its worth over several decades. The machine's unique pre-sieve system, strategically positioned just behind the rotors, ensures a one-time-only threshing of material, effectively supercharging its capacity.

Completing the roster is the John Deere S 760, featuring a single rotor setup with a twist, quite literally. Its innovative TriStream rotor, fashioned to a slight taper and angled to optimize material flow through the combine, promises the finest threshing performance.

As the highly-anticipated race takes off, an electrifying contest unfolds. The Massey Ferguson, Case IH, and New Holland engage in a nail-biting battle, with the John Deere maintaining a close pursuit. However, by the race's midpoint, Case IH surges ahead, marking a slight but distinct lead. The final standings see Case IH in a comfortable lead, followed by New Holland, Massey Ferguson, and John Deere bringing up the rear in the fourth position.

Interestingly, despite its initial speed and crossing the finish line first, the Case IH stumbled in the waste management sector, securing a meagre 6.22 out of a potential 20 points. In a twist of events, the final results see New Holland securing a resounding victory with a total of 86.72 points, trailing by Massey Ferguson with 76.73 points, Case IH with 76.37 points, and John Deere finishing fourth with 69.38 points.

Organized by the Grootpan Studiegroep, the 2023 Combine Race delivers an exhilarating showcase of the future of agricultural machinery, underscoring the fact that being first across the finish line doesn't always secure victory. It emphatically demonstrates that overall performance, factoring in waste management and efficiency, are crucial determinants of the true champion. The cliffhanger competition in this class kept spectators riveted until the very end when the final tally unveiled the real winner.

KLAS 6
WENNER



CR6.80

TEGNIJSE DATA

SPOED	45.75
GRUIS ONDER SIF	06.99
GEBREEKTE PITTE BO SIF	08.23
VERMORSING AGTER STROPER	19.05
KOPPE GELOS/GEKNIP	07.50
TOTAAL	87.52%

Save up to 30% annually

With 'pay as you farm' we track your vehicles in real-time, whether they're being used in the fields or stored in the shed... And they're always covered comprehensively, wherever they are.



PAY AS YOU FARM



You can use this tracking data to make accurate usage decisions from wherever you are, while we use the data to award an annual rebate of up to 30% on your policy's annual renewal date.

The future of farming is saving, thanks to 'pay as you farm' from King Price.

Chat to your broker or pop us an email at agri@kingprice.co.za



KingPrice
INSURANCE

MAXIMIZING HARVEST EFFICIENCY WITH THE NEW HOLLAND CR6.80

ANDRÉ GROENEWALD
DIRECTOR (FARMSPACE)

Photo credit: CNH Industrial



Photo credit: CNH Industrial

In the dynamic landscape of agriculture where each grain counts, it is critical to leverage cutting-edge machinery and technology. A standout in this space is the CR6.80 combine harvester from New Holland, which significantly boosts farming productivity and efficiency with its innovative threshing mechanism and high-performing engine.

A flagship feature of the CR6.80 combine harvester is its Twin Rotor™ technology, meticulously engineered to maximize threshing efficiency and minimize grain loss. The system utilizes S3 rotors with a diameter of 43.18 cm and a notable length of 263.65 cm to make sure that every kernel is properly threshed in one go.

The CR6.80's threshing mechanism is characterized by its fixed rotor vanes and electrically adjustable concaves, offering a wrap angle of 86 degrees, which can be extended up to 121 degrees. The combine also features three separation grates per rotor with a wrap angle of 148 degrees, ensuring an efficient and thorough separation process, thereby minimizing grain damage and loss.





Photo credit: CNH Industrial

To cement this, the CR6.80 comes equipped with the Opti-Clean™ cleaning system and a self-levelling cleaning shoe. These, coupled with a total sieve area of 5.4 m² under wind control and remote control sieve setting, guarantee a clean grain sample, further enhancing the harvesting process's efficiency.

Fueling this sophisticated threshing mechanism is the powerful FPT Industrial engine that drives the CR6.80. This combine is powered by a Tier 3-compliant FPT Cursor 9 engine. This isn't just any engine – it's a powerhouse with a capacity of 8700 cm³ and a common rail injection system.

The performance of the CR6.80's engine is indeed commendable. The engine operates at a rated power of 230 kW or 312 horsepower at 2100 rpm, in accordance with ISO TR14396 – ECE R120 standards. This power can surge up to a maximum of 268 kW at 2000 rpm, delivering ample power for the most demanding harvesting conditions.

The engine's power is smoothly transferred via a 4-speed hydrostatic transmission, complete with remote gearshifting and a differential lock. Optional two-speed powered rear wheels provide additional power and traction in challenging terrains.

In Conclusion, the advanced threshing mechanism and potent engine of the New Holland CR6.80 together optimize harvesting efficiency. This bears testament to New Holland's unwavering commitment to innovation and their drive to deliver high-performing, precision agricultural solutions. With its sophisticated features and robust performance, the CR6.80 is poised to certainly ruffle some feathers.

Photo credit: CNH Industrial



THE COMFORT OF THE MASSEY FERGUSON 9695

André Groenewald
Farmspace (Director)



Photo credit: Swart Kat Productions

If you're looking for a straightforward combine that's easy to operate, the Massey Ferguson 9695 is for you. The philosophy here is to stick with what works and improve upon it bit by bit. From the engine to the threshing action, they've kept the operator in mind.

But don't let simplicity fool you; it doesn't hold back when it comes to what matters...



Photo credit: Swart Kat Productions

The central feature of the MF 9695 is its innovative Trident threshing mechanism. This includes a 700 mm diameter rotor designed to ensure an equal flow of material through the rotor by means of a 360-degree input. This system reduces the likelihood of clogging by using spring-loaded concaves that yield and dump the material backward when the volume becomes too large. This process ensures a smooth and efficient harvesting experience, easing the harvest process and ensuring the operator spends his time where it's needed. Busy harvesting.



MASSEY FERGUSON

The heart of the MF 9695 is the AGCO Power engine. This engine, known for its reliability and performance, delivers an impressive 240 kW. This combine further sets itself apart by placing the engine and rotor in line with each other, ensuring maximum power transfer and harvesting efficiency.

Furthermore, the MF 9695 also has a V-cooling system - a dual cooling setup in a V-shape, equipped with a sieve at the top and an independent reversing fan. This ensures that the engine stays cool, even under the most demanding harvesting conditions.

The MF 9695 is designed with the farmer's needs in mind. Access to the engine is easy, through a large flap on the right side of the machine. This design ensures that engine maintenance and inspections can be effortlessly carried out. The air drawn in by the engine's air filter comes from the V-cooling system, meaning the ingested air is even cleaner than normal – an essential advantage in dusty conditions.

Inside the cabin, the MF 9695 offers a spacious and comfortable operating environment. With its thin corner pillars that don't obstruct the line of sight and an easily accessible control panel at the right armrest, this machine sets a new standard in user-friendliness.



Photo credit: Swart Kat Productions

The Massey Ferguson 9695 is the newcomer of harvesting and introduces a new era of innovative and farmer-friendly technology in the agricultural industry. With its powerful AGCO Power engine, its efficient Trident threshing system, and its user-friendly design, this combine is ready to change the game and take farmers' harvesting process to new heights.

CASE IH

Photo credit: Swart Kat Productions



A NEW WAY FOR A CLEANER HARVEST WITH CASE IH 6150

Photo credit: Swart Kat Productions



These combines have built a solid reputation around their reliable threshing mechanism and mechanical simplicity. It's a potent combination of proven technologies and innovative features that made it a significant player in this year's competition.

The key to the Case IH 6150 lies in its well-known Axial-Flow system, an innovative design that has defined combine design and performance for decades. The Axial-Flow concept offers a way to thresh and separate grain in a single pass, combining efficiency and quality to deliver unmatched performance.

The Axial-Flow system uses a horizontally mounted rotor as the "beating heart" of the machine. As the material enters the rotor, it makes a spiral journey along the length of the rotor (Axial-Flow) and is effectively threshed. The design of the rotor is optimized to separate grain gently but effectively, minimizing grain damage and maximizing yield.

After the grain is separated, it goes through the highly efficient Cross-Flow Cleaning System. This system uses a series of sieves in combination with a high-volume Cross-Flow fan, designed in a unique chevron shape. The fan effectively blows away lighter material, while the heavier grain stays on the sieves, separating the grain from the chaff and straw in the process. The efficiency of this cleaning process is further enhanced by an optional feature: automatic fan speed adjustment, which ensures that the fan's speed is adjusted according to the slope of the terrain, thereby ensuring optimal cleaning performance and minimizing losses.

When it comes to power, the Case IH 6150 is certainly not lacking. The robust 260 kW FPT engine is designed for optimal fuel efficiency and stands its ground in all conditions. Paired with a direct mechanical drive system, it ensures an efficient power transfer for a wide range of components. This simplicity of drive lines reduces the need for complex maintenance and ensures reliable operation.

As the descendant of one of the former winners, the Case IH 6140, the Case IH 6150 was undoubtedly one of the favourites for the Class 6 division this year.



Photo credit: Swart Kat Productions

Photo credit: Swart Kat Productions



NEW TECHNOLOGY WITH JOHN DEERE S760

By: Lizelle Fourie

The John Deere S760 combine harvester is a powerful machine that provides many benefits to farmers. One of its key features is the Combine Advisor™ package which helps to set, optimize and automate main combine functions when conditions change. This package includes the ActiveYield™ system which provides fully automated yield sensor calibration, supplying accurate data with no time spent calibrating.



Photo credit: John Deere

Photo credit: Swart Kat Productions



The S760 also has a comfortable S700 cab that is common with tractors and sprayers for ease of use. The continued quality manufacturing of S-Series combines maximizes uptime and productivity.

In terms of technology, the S760 features the TriStream rotor which helps maximize fuel efficiency by reducing the force required to move material through the combine by as much as 20 percent. High capacity starts at the feeder house, where the S Series provides large areas of clearance for high volumes of crop to flow uninterrupted.

In terms of specifications, the S760 has a John Deere PowerTech™ PSS engine with a 9.0 L displacement and a rated power of 249 kW (333 hp)¹. Its fuel capacity is 950 L (250 gal.)¹. The rotor length is 312 cm (123 in.) and the rotor diameter is 76.2 cm (30 in.)¹. The concave area is 1.1 m² (11.8 sq ft) and the separating area is 1.54 m² (16.6 sq ft)¹. The total cleaning area (louvered) is 5.1 m² (54.9 sq ft)¹. The grain tank size is 10,600 L (300 bu) and the peak unloading rate is 127 L/s (3.6 bu/sec)¹.

Overall, the John Deere S760 combine harvester provides many benefits to farmers through its advanced technology, ease of use, and high-quality manufacturing.



Photo credit: John Deere



Alternatiewe Energie & Selfstandigheid ekspo! 9-12 Augustus 2023

Diamantvallei Landgoed, 20km oos van Pretoria



600 Uitstallers



50% Afslag indien
vooraf registreer!



Kinders tot 18 GRATIS.



30 000+ Besoekers



OPVOEDKUNDE SUB-EKSPO



LANDBOU SUB-EKSPO in
samewerking met TLU SA



KUNS EN KOU MARK
in samewerking met
Solidariteit Helpende Hand



*Kom ons bou 'n
Kragstasie*

087 231 1644
www.kragdag.co.za



SAKELIGA KRAGDAG 2023:

Let's Build a Power Station

Sone Saunders

-Kragdag General Coordinator



If you're tired of the constant disruptions from load shedding and other problems in South Africa, and you're seeking ways to become independent and sustainable, then Sakeliga KragDag 2023 is a must-visit. The expo is set to take place from August 9-12, 2023 at Diamantvallei Landgoed, just 20km east of Pretoria. KragDag is the largest alternative energy and self sustainability expo in the country, with more than 600 companies participating this year.

The theme for Sakeliga KragDag 2023 is "Let's build a power station". This "power station" should not necessarily be understood literally, but is a metaphor for self-reliance in households, businesses, and communities.

The expo, which spans the area of twelve rugby fields, attracted about 31 000 visitors in 2022 and provides a platform for inspiration and information on every aspect of an sustainable lifestyle: from alternative energy, food cultivation, safety and new technology, to education, entrepreneurship, and outdoor life. Various presentations on current issues and solutions for self-sustainability are also made in the "Raadsaal".

The Agriculture sub-expo, in collaboration with TLU, offers something for emerging and established farmers in the grain, livestock, and crop industries, but also for

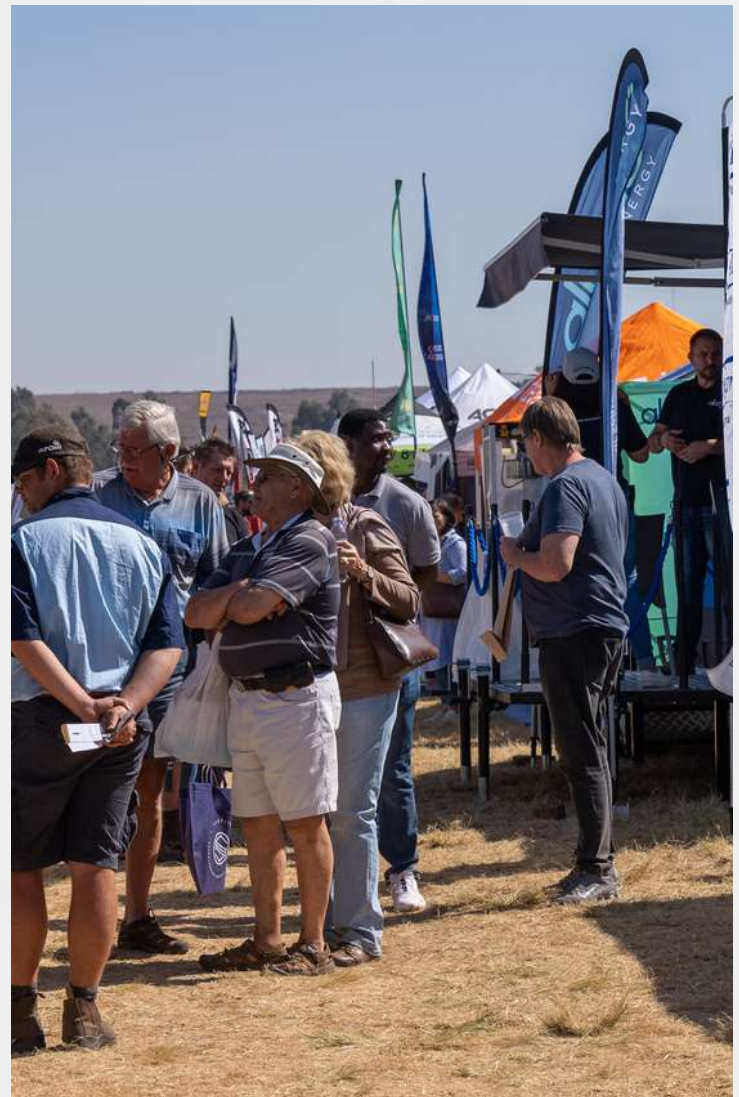


the small scale and backyard farmer. The program includes a jam-packed arena and show program, with one of the highlights being Plaasmedia's annual Toyota Junior Auctioneer competition regional finals.

But Sakeliga KragDag is not just a trade show. It's a wonderful family experience with plenty of entertainment for the kids with a chew and art market, a variety of food, and a beer garden with stage performances. Visitors can even camp at the KragDag campsite with their own caravan / tent, or in ready furnished tents.

For those traveling by light aircraft, they can land at Rhino Park Airfield and utilize the shuttle service to the expo. Helicopter owners also have a landing strip available at the expo site.

Purchase your ticket online today and get a 50% discount - this gives you access to all four expo days! Visit www.kragdag.co.za for more information!



Do your own thing – it's a lifestyle!



AANBOD:

50 Geregistreerde Ramme

90 Geregistreerde Ooie

250 Kommersiële Ooie

Nota: Ramme vrugbaar gesertifiseer.
Dragtigheidsstatus en katalogus inligting
sal dag van veiling beskikbaar wees.



Onthou die datum!



24^{ste}

OVERVAAL ILE DE FRANCE KLUBVEILING

Saterdag | 5 Augustus 2023 | 11:00

te **Bona Bona** (langs N12) tussen
Klerksdorp en Wolmaransstad



Onder beskerming
van die
Ile de France
Skaaptelers Genootskap.



Terme: Volledige veulingsreëls is beskikbaar by: www.bkb.co.za

AFSLAERS:
BKB LIMITED
61 GRAHAMSTOWN RD, NORTHEAST,
PORT ELIZABETH, 6001
BTW NR.: 4100101338
REG NR.: 1998/012435/06

NAVRAE:
DIAAN NIEUWENHUIS 083 636 2314
OVERVAAL ILE DE FRANCE:
GERT VAN DER LINDE 079 524 7954
YVONNE DAFFUE 082 820 5595
AFSLAER: JAN MOSTERT 083 306 8408

MEERKAT
ONLINE AUCTIONS

BKB

The Trusted Home of Agriculture
Die Betroubare Tuiste van Landbou

TIME FOR THE BIG DOGS!

ANDRÉ GROENEWALD
FARMSPACE (DIRECTOR)

THE COMPETITORS

NEW HOLLAND CR7.90:

This contender, technically a Class 7 combine, is a plucky participant in the Class 8 race. The CR7.90, despite its smaller power output of 300 kilowatts and lesser sieve capacity, innovates with a twin rotor setup. This setup recycles grain via a pre-sieve system, effectively boosting its capacity.

FENDT IDEAL 8:

This brand-new machine from Fendt boasts a power output of 401 kilowatts and a twin rotor setup, featuring the longest rotors in the industry, a testament to Fendt's innovative design and engineering prowess.

CASE IH 8250:

At the helm of this formidable machine is Tommie Scholtz, a farmer imported from Bergville with his combine. The Case IH 8250 is equipped with a smart harvest command system that automatically adjusts for optimal harvesting, preventing unnecessary seed wastage. Furthermore, its single rotor setup ensures proficient grain cleaning. The Axial-Flow system has been at the centre of Case IH for decades. How will it stand the test of time?

When 2 June 2023 rolled around, the fields were alive with the hum of heavy machinery, for it was the day of the Class 8 Combine Race. With five power-packed entries from leading manufacturers and a gutsy independent farmer, the event promised an adrenaline-filled spectacle of speed and state-of-the-art technology.



Foto krediet: FarmSpace video

CLAAS 7600:

With Andre Du Preez in the driver's seat, the Claas 7600 utilizes a hybrid system. The traditional threshing system is supported by two additional rotors for separation, ensuring most of the threshing gets done by the three drums upfront, boosting overall operational efficiency. With Andre having the home ground advantage, how will he do?

JOHN DEERE S780:

John Deere introduces the unique TriStream system with its S780 model. The single rotor setup is specially angled and tapered, assisting in threshing and guaranteeing a smooth grain flow through the combine.

Adding to the lineup is the son of Andre's brother, also Andre Du Preez or Doeipi, continuing the legacy of competing in the annual Combine Race, representing the spirit of independent farming amid these corporate behemoths.

As the race kicked off, a minor delay at the start saw the Fendt Ideal, New Holland, and Case IH machines lagging, but Andre Du Preez's Claas 7600 quickly took the lead. The New Holland, facing a power disadvantage, began falling behind, while Tommie Scholtz's Case IH 8250 found itself locked in a fierce battle with the leading CLAAS 7600.

The competition took an unexpected twist when Doeipi, due to a sieve malfunction, had less grain material going through his combine. This enabled him to accelerate and overtake the field.

The thrilling competition concluded with a photo finish. Video footage showed the CLAAS barely ahead of the Case, but after factoring in all timings and revisiting the drone footage, the Case IH 8250 was declared the winner, finishing just a second ahead of the CLAAS.

John Deere bagged the third spot, followed by Fendt in fourth and New Holland in fifth place. The final points, based on a 100-point scale, considered speed (50 points), quantity of gravel under the sieve (10 points), broken seeds on top of the sieve (10 points), wastage behind the combine (20 points), and cobs left behind by the combine (10 points).

The event, organized by the Grootpan Studiegroep and Du Preez Landgoed, calculated the rankings based on several criteria, including speed, gravel quantity under the sieve, broken seeds on the sieve's top, wastage behind the combine, and leftover cobs. The final scores stood at Case IH leading with 92.08 points, Claas Lexion earning 85.95 points, Fendt Ideal with 82.72 points, John Deere accumulating 75.81 points, and New Holland securing 63.44 points.

The Class 8 Combine Race 2023 offered a fascinating glimpse into the future of agricultural machinery and competition, with Case IH taking home the victory. It was a thrilling day, and all participants deserve commendation for their superb performances.



AANGEBIED DEUR
GROOTPAN STUDIEGROEP



IN SAMEWERKING
MET DU PREEZ LANDGOED



MEDIADEKKING
DEUR FARMSPACE



FS FARMSPACE



AANGEBIED DEUR
GROOTPAN STUDIEGROEP



IN SAMEWERKING
MET DU PREEZ LANDGOED



MEDIADEKKING
DEUR FARMSPACE



FS FARMSPACE

KLAS 8

WENNER

CASE IH 8250

Moontlik gemaak deur CASE IH

CASE IH



STROPER RESIES 2023 • KLAS 8 • DEELNEMERS

TEGNIESE DATA

KRITERIA	%	CASE 8250	CLAAS LEXION 7600	FENDT IDEAL 8	JOHN DEERE S780	NEW HOLLAND CR7.90
SPOED	50%	45,85	45,54	37,23	45,54	25,85
GRUIS ONDER SIF	10%	08,62	08,01	07,72	07,62	08,04
GEBREKTE PITTE BO SIF	10%	08,26	07,03	08,31	07,79	07,80
VERMORSING AGTER STROPER	20%	19,35	19,58	19,45	04,86	16,75
KOPPE GELOS \ GEKNIP	10%	10,00	05,00	10,00	10,00	05,00
TOTAAL		92,08	85,95	82,72	75,81	63,44







RUGER

BH 18 637

Son of Picasso GF 10 23

ON AUCTION
5th of August



**PRODUCTION
AUCTION**

Saturday

05 AUG 11am

40 SP females
10 SP bulls
50 cross bred boran females

BENEFITS OF BUYING BORAN FROM US

*Pedigrees are DNA verified
Largest registered Boran herd in the world
Unparalleled genetic diversity
Quarantine assistance for exports available
Free transport to select destinations
Guaranteed weaner calf buy back at a premium*



**THE BULL RING
AUCTION HOUSE**

**SUMMER
SALE**

Tuesday

10 OCT 11am

30 SP females
20 SP bulls
10 cross bred boran females

THE BULL RING AUCTION HOUSE | DAVEL

THE BULL RING AUCTION HOUSE | DAVEL



Simeon Hurwitz 082 415 5448 | Jarren Hurwitz 082 412 3393
www.hurwitz.co.za | www.boranauction.co.za



Photo credit: Swart Kat Productions

ANDRÉ GROENEWALD
FARMSPACE (DIRECTOR)

NEW HOLLAND CR 7.90

In a world of constant innovation and improvement, New Holland has set its own standard with its Twin Rotor™ technology, which has left its mark on the agricultural industry for years.

At its core is the FPT Industrial Cursor 8.7 litre engine, delivering a powerful 300 kW. This engine, in combination with New Holland's forward-thinking technologies like IntelliSteer® automatic steering, enables the CR 7.90 to operate precisely, even as the hours grow long. And with the addition of the new, optional Dynamic Feed Roll™, capacity has been improved by up to 15%, all without compromising grain quality.

The centrepiece of this harvester's operation, however, is the Twin Rotor™ technology. More than 35 years ago, New Holland introduced this breakthrough technology, which fundamentally changed the way farmers harvest. The Twin Rotor™ system is designed to provide a gentle, multi-return action that ensures outstanding grain and straw quality.



The success of this system lies in its unique design. The Twin Rotor™ has a large separation surface, offering maximum contact area with the crop, which ensures effective separation and less grain damage. It creates an environment where grain can be separated gently but effectively without compromising quality.

But the CR 7.90 is not only known for its power and capacity. It also offers a highly pleasant harvesting experience. The Harvest Suite™ Ultra cabin is designed to offer operators an unparalleled view and a quiet, comfortable working environment. It includes an Intelliview™ IV color touch screen monitor for intuitive operation and control of all important harvest parameters.


This focus on innovative technology, coupled with an unwavering dedication to quality, has placed New Holland's CR 7.90 harvesters in a class of their own. With its proven reliability and its ability to deliver excellent results, even under the most difficult conditions, the CR 7.90 is a powerful contender in any harvester race, even in class 8.



Photo credit: Swart Kat Productions



Photo credit: Swart Kat Productions



CASE IH BELIEVES A BIG ONE IS BETTER THAN TWO SMALL ONES

By: André Groenewald - Director (Farmspace)

Photo Credit: CASE IH

Modern agriculture demands highly efficient and reliable machinery. The Case IH 8250, part of the rich heritage of Axial-Flow® combines meets this demand with its single rotor design, highly advanced hydraulic system, and powerful engine.

THE SINGLE ROTOR DESIGN: FROM AXIAL-FLOW® HERITAGE TO INNOVATION

Foto Krediet: Swart Kat Productions

The Case IH 8250 is a proud continuation of the Axial-Flow® heritage that farmers worldwide have trusted for decades. One of the key features that

distinguish this series of combines is the single rotor design, a noticeable improvement over traditional designs.

With its rotor diameter of 762 mm and length of 2,638mm, the Case IH 8250 can handle a wide range of crop conditions, from dry to wet, by operating at speeds between 220 and 1,180 rpm, depending on the crop and conditions. This single rotor design is further reinforced by the Power Plus drive system with reversibility that delivers constant, high torque.



HYDRAULIC SYSTEM: EFFICIENCY AND RELIABILITY

Photo Credit: CASE IH



In keeping with its heritage of innovation, the Case IH 8250 has an advanced hydraulic system that enhances the machine's reliability and ease of maintenance. This system reduces the need for traditional belts, leading to a decrease in maintenance costs.

The hydraulic system is also central to several operational components of the Case IH 8250, including the rotor drive system, the cleaning fan, and the final drive. It also provides the ability to make quick adjustments to machine settings, including the speed of the cleaning fan, which can vary between 300 and 1,150 rpm.

POWER UNDER THE HOOD: THE 12.9 L ENGINE

The powerful engine of the Case IH 8250 is an integral part of its performance. This 6-cylinder, turbo-charged FPT engine has a capacity of 12.9 liters and delivers an impressive 365 kW at 2000 rpm. This enables the machine to handle heavy crop conditions with ease. In addition, this powerful engine meets the stringent "Stage IV" exhaust emission standards, making it a sustainable and environmentally friendly choice.

The Case IH 8250 Axial-Flow®, with its single rotor design, advanced hydraulic system, and powerful engine, offers an impressive combination of power, efficiency, and reliability.

Photo Credit: CASE IH



FENDT IDEAL 8

André Groenewald
Farmspace (Director)



Photo credit: AGCO

The Fendt IDEAL 8 combine harvester represents the culmination of more than five years of strategic planning and an investment of over R8 billion by parent company AGCO, known for established brands such as Massey Ferguson, Fendt, Valtra, and Challenger. This remarkable combine is the result of extensive customer feedback and rigorous design and development processes aimed at meeting the demand for greater capacity, productivity, and advanced automation.

The groundbreaking development process of the IDEAL 8 began from the inside out, with the core of the combine—the threshing system—first developed in a laboratory. Following this, the system was implemented in three existing models for a field testing phase that started as early as 2014. The results were impressive enough to manufacture 22 pre-production units that have since worked across various crops and conditions worldwide, thereby placing a machine on the market that can harvest under any circumstances.

The IDEAL 8 is equipped with a powerful 12.4-liter MAN engine, delivering 401 kW. The engine includes an AirSense® cooling unit with a 950mm reversible fan and a cooling surface of 2.7 m². The fan can reverse depending on time and temperature to keep the cooling unit clean, ensuring optimal performance.

One of the key features of the IDEAL 8 is its unique helical threshing and separation system. The system ensures that grain is cleanly separated with minimal impact on straw quality and requires significantly less power than other systems, according to AGCO. The potential power savings range from 20 to 50%, contributing to increased output.

The IDEAL 8 further boasts an enormous grain tank capacity of 17,100 liters and a fast discharge capacity of 210 liters per second via a 42cm discharge pipe. To ensure clean harvesting at all times, the IDEAL is equipped with 52 acoustic mass sensors. This allows operators to effectively control output and quality while the machine continuously adapts to changing harvest conditions.

Built with the farmer in mind, the Fendt IDEAL 8 combine is more than just an innovative piece of machinery. Its robust capabilities, combined with its impressive threshing technology and energy-saving engine design, position it strongly in the combine market.



Photo credit: AGCO



Photo credit: Swart Kat Productions

A MACHINE WITH A BIG HEART

The S780 is almost at the top of the John Deere S-Series combines. Can this harvester defend its crown from 2019? Let's dig a little deeper.

At the heart of the S780 is the muscular John Deere PowerTech PSS engine. With its 13.5 L engine delivering a powerful 353 kW and an extra 37 kW boost at 2100 rpm, this combine certainly has no problem doing the hard work.

The S780 is equipped with a rotary separator with a concave area of 1.1 m² and a separating area of 1.54 m². The critical part of the threshing process, the rotor, is an impressive 312 cm long and 76.2 cm wide. It operates between 210 and 1000 rpm, meaning you can easily adjust it to suit any harvest conditions.

The S780's TriStream™ rotor, specially designed by John Deere for high performance in particularly large grains, makes the machine very fuel-efficient by using up to 20% less power to move material through the combine. It also has a slightly more pointed front to reduce the "growl" that sometimes happens with thick material and heavy rotor loads, which means more productivity.

Thanks to the spiral wings that guide the crop material through the feed and threshing area, there is less hesitation and more efficiency. And the rifling grooves on the rotor elements help the rotors handle large volumes of crop material more effectively, which improves overall threshing performance.

The S780's grain handling capability is also not to be underestimated. With a grain tank that can handle up to 14,100 liters, you can carry out large harvest operations without having to empty frequently. You can choose between an unloading pipe of 6.9, 7.9, or 8.7 meters, depending on your needs.

The S780 can reach a peak unloading speed of 150 liters per second, which means you don't have to wait long to unload your harvested grain. Combined with the large grain tank, this means longer, uninterrupted harvesting periods which save you more time and effort.



To sum it all up, the John Deere S780 Combine is a true power machine built to handle the toughest harvest conditions. With its impressive specifications and advanced threshing mechanism, including the smart TriStream™ rotor, it offers incredible performance and fuel efficiency. This makes the S780 a wise investment for any farming operation. This combine clearly demonstrates John Deere's commitment to innovation, quality, and the continuous improvement of agricultural productivity.

THRESHING DRUM OR ROTOR OR BOTH?

ANDRÉ GROENEWALD
FARMSPACE (DIRECTOR)

In the world of agricultural machinery, the CLAAS 7600 stands out as a symbol of technological innovation and unparalleled performance. This harvester, designed and manufactured by the German manufacturer CLAAS, delivers a stunning level of productivity and efficiency to meet the evolving needs of the modern agricultural sector.

The CLAAS 7600 is powered by an impressive MAN D26 engine that delivers a power output of 339 kW. The fuel-efficient design not only promotes cost savings but also significantly contributes to environmental sustainability.

This model includes an intelligent cooling system that adapts to the outside temperature and engine load to ensure optimal performance and longevity of the machine.

The 7600 comes with a staggering grain tank capacity of up to 13,500 liters, offering operators the luxury of extended harvesting times without regular interruptions to unload. It also boasts a rapid unloading rate of 110 liters per second, significantly reducing downtime and increasing productivity.

Photo credit: Swart Kat Productions



THRESHING AND SEPARATION:

Photo credit: Swart Kat Productions

At the heart of the CLAAS 7600 lies its innovative threshing and separation system, designed to ensure the cleanest and most efficient harvest. The system incorporates Class' unique APS HYBRID HARVESTER, a combination of the APS threshing unit and the ROTO PLUS post-harvest separation. This allows the machine to deliver excellent throughput while using less power, offering up to 20% more productivity compared to conventional systems.

The APS threshing unit, with a high-speed transverse drum and pre-accelerator, ensures effective initial threshing that helps protect grain quality and integrity. Meanwhile, the ROTO PLUS system takes care of secondary separation, guaranteeing minimal grain loss, even under challenging harvest conditions.



The CLAAS 7600 is further equipped with its proprietary CEBIS operating system, giving operators complete control over every aspect of the machine's operation. It features a touchscreen that provides immediate feedback on the machine's condition and grain quality, enabling operators to make immediate adjustments to maximize efficiency.

The CLAAS 7600 harvester is an impressive manifestation of CLAAS's commitment to empowering farmers with innovative and effective agricultural solutions. Its excellent specifications, combined with an advanced threshing system, make it an indispensable asset in the agricultural sector. Whether the task involves wheat, barley, corn, or any other crop, the CLAAS 7600 promises to deliver top performance, increased output, and improved sustainability in agricultural operations.



Photo credit: Swart Kat Productions



Photo credit: Swart Kat Productions


3de JAKARANDA ILE DE FRANCE Veiling

AANGEBIED DEUR HAGELAND

SATERDAG 19 AUGUSTUS 2023

FIRE & WINE ARENA, PRETORIA

Plot 43, Boschkop Road, Zwavelpoort, Pretoria

 -25.8082365937, 28.392663002



cdp

AUCTIONEERING
SERVICES

MARKETING

ADMIN

ONLINE



ONLINE AUCTION REGISTRATION:

<https://bid.cdpauctioneers.co.za/auctions/info/id/87/JAKARANDA-ILE-DE-FRANCE-VEILING>
ONLINE CONDITIONS: IFICA DOCUMENTS AT REGISTRATION 31 TL ONLINE AUCTION COMMISSION PAYABLE

FOR MORE INFORMATION: WWW.CDPAUCTIONEERS.CO.ZA



5 ALTERNATE USES FOR YOUR LEAF BLOWER

(THAT DOESN'T INCLUDE BLOWING LEAVES)

PRESS RELEASE

BY: JOHAN KRUGER
NATIONAL SALES MANAGER
HUSQVARNA SOUTH AFRICA
MOBILE: +27 (0) 83 637 0826



A Leaf blower is a highly versatile piece of equipment, and is as essential in a manicured estate as they are in the bushveld.

"The range of solutions offered by leaf blowers is both practical and extremely useful for both domestic and agricultural purposes," says Johan Kruger, National Sales Manager for Husqvarna South Africa. He adds that there are a range of jobs – both around the house and on a farm – that call for a powerful gust of air, and the convenience of a cordless leaf blower offers a solid solution.

Johan gives just a few alternative uses for your leaf blower (although he says that the more you use it, the more uses you will find for it):

1. FIRE CONTROL

Probably the most important of all leaf blower alternative uses is fire control. Fires are a very real threat to farms or smallholdings, particularly in the winter months when it is so dry. Burning firebreaks, therefore, is an annual necessity performed by farmers. However, in the event of it becoming a runaway fire, not only can it damage your own property but you can be held liable for any potential damage caused to other's property too. Many people don't know this but leaf blowers can be very effective in this regard. The Husqvarna 578BTF not only

has a heat-resistant nozzle, but it also has protected fuel lines and a filtration system that prevents soot and dust getting into the engine. This makes it the perfect tool to help quell fires by back burning (blowing the fire onto itself) or to direct controlled burning (in the case of fire breaks).

2. OUTSIDE MAINTENANCE

Blocked gutters can cause a major headache, particularly during the rainy season when they start overflowing. You can save yourself a lot of time and trouble by simply blowing leaves and other debris out every couple of months.

3. CLEANING

Whether you're cleaning garden equipment like mowers or edge trimmers or just tidying a pathway after replanting a flower bed, nothing is more effective than a leaf blower. It gets into the nooks and crannies far better than a brush or broom can, and takes far less energy. And, domestic use of a leaf blower is not just limited to the outside. It is an excellent way to clean out your vacuum cleaner filter. Simply hold the blower outlet over the hole that goes into the centre of your filter and blast away (just ensure that you're in the garden when you do this!) Finally, farmers and DIY enthusiasts who have workshops on their properties can save themselves a lot of time and effort sweeping by using their leaf blower to remove wood shavings and fine sawdust.



4. THREADING

If you need to send a wire through a tight spot or a pipe, try tying the wire to a folded cloth or piece of sponge, and use your leaf blower to blow the wire through.

5. DRYING

Whether you're cleaning garden equipment like mowers or edge trimmers or just tidying a pathway after replanting a flower bed, nothing is more effective than a leaf blower. It gets into the nooks and crannies far better than a brush or broom can, and takes far less energy. And, domestic use of a leaf blower is not just limited to the outside. It is an excellent way to clean out your vacuum cleaner

"A leaf blower has become an invaluable tool to avid gardeners and farmers alike and well worth the spend to have one alongside your other essential garden implements," concludes Johan.

Husqvarna's range is quality, value and Africa-ready so make sure you test drive one at your closest stockist. Pop on to <https://www.husqvarna.com/za/> to find out where they are.

FUN FACT:

Did you know that leaf blowers are used to cool down rhinoceros during their dehorning process?




Husqvarna

CREAM OF THE CROP



New Holland Combines are now the most preferred combine in Europe with the most sales year to date.



48 YEARS OF EXPERIENCE. THE ORIGINAL MANUFACTURERS OF TWIN ROTOR TECHNOLOGY.

CR6, CR7 & CR9 Revelation models are available with options like Twin Pitch rotors, dynamic feed roller & IntelliSense™ automation system. The award-winning IntelliSense™ automation system takes productivity to a whole new level. This system maximizes capacity and minimizes losses and grain damage. The IntelliSense™ offers benefits to the operator, such as making less decisions, better comfort and increased operator confidence, less fatigue and a simpler user interface. Furthermore an operator can choose from four time-saving strategies: limited loss, best grain quality, maximum capacity, or fixed throughput.

Model	Rated engine power	Grain tank capacity	Rotor diameter	Total sieve area
CR6.80	230 kW @ 2100 rpm	9 000 ℓ	2 x 432 mm	5,4 m²
CR7.90 Revelation	300 kW @ 2100 rpm	11 500 ℓ	2 x 432 mm	5,4 m²
CR9.90 Revelation	390 kW @ 2100 rpm	14 500 ℓ	2 x 559 mm	6,5 m²

NEW HOLLAND HARVEST —EXCELLENCE— APP IS NOW LIVE

This app aims to help farmers optimise their combine's efficiency and performance, giving ideal machine settings based on operator, crop and field conditions. It also provides issue resolution support when needed.



NEW HOLLAND Grain Cam™ Mobile

Use this app to calculate grain loss during harvesting and to optimally adjust your combine harvester. Grain Cam™ Mobile makes this possible without laborious manual grain counting or weighing, which means combined adjustments can be made rapidly in response to correct any issues to minimize losses and maximize production.



Contact your nearest New Holland dealer today or phone:

Eduan Booyens (071 871 8163) - North West, Free State, Gauteng, Limpopo and Mpumalanga

Paul de Korte (064 752 1613) - KwaZulu-Natal

Quintus Smit (082 524 7397) - Western Cape, Northern Cape and Eastern Cape



www.newholland.com/za





As the backbone of Africa's economy, the farming industry faces numerous challenges, including the often-overlooked threat of dust. Dust may seem inconsequential, but its impact on vegetation, farm workers, and overall profitability is substantial. In light of these risks, FlowCentric Mining Technology developed and offers comprehensive road dust suppression and monitoring services tailored to address the needs of the African farming industry.

The Dangers of Dust

Dust poses a range of hazards that can disrupt agricultural operations and compromise the well-being of farms. Firstly, the deposition of dust on leaves negatively affects photosynthesis, resulting in reduced crop yields. Dust particles block sunlight, increase leaf temperature, and inhibit the exchange of gases through stomata, impeding plants' ability to thrive.

Furthermore, the presence of dust can lead to the proliferation of scale insects, damaging crops and diminishing harvests. Dust particles create unfavourable conditions for the natural predators of these pests, undermining the ecological balance essential for sustainable farming practices.

The health risks posed by dust exposure are also significant. Farm workers regularly exposed to airborne dust are at a higher risk of developing respiratory problems,

including allergies, asthma, and other respiratory ailments. Protecting the well-being of workers is not only a moral imperative but also crucial for maintaining a productive workforce.

Road Dust Suppression Services

To address the pressing issue of dust on farms, FlowCentric Mining Technology offers a cutting-edge solution: Roadtech Agri. This specialised dust suppression product is designed to cater to the needs of the African farming industry, providing a long-lasting and environmentally friendly alternative to traditional water spraying methods.

Roadtech Agri is a biodegradable and water-soluble product that ensures the safety of sensitive areas, including water sources, crops, and trees. Its unique formulation is optimised to withstand heavy traffic volumes typically found on farms, promoting road surface stability, and reducing wear and tear on vehicles and equipment.



By incorporating Roadtech Agri into routine dust suppression procedures, farmers can enjoy several benefits. The product creates smooth, water-resistant road surfaces that remain skid-resistant even during wet weather conditions, while substantially reducing dust levels during dry seasons. With fewer dust-related problems, farmers can minimise the need for frequent water spraying, resulting in cost savings on fuel and water expenses.

Dust Monitoring Services

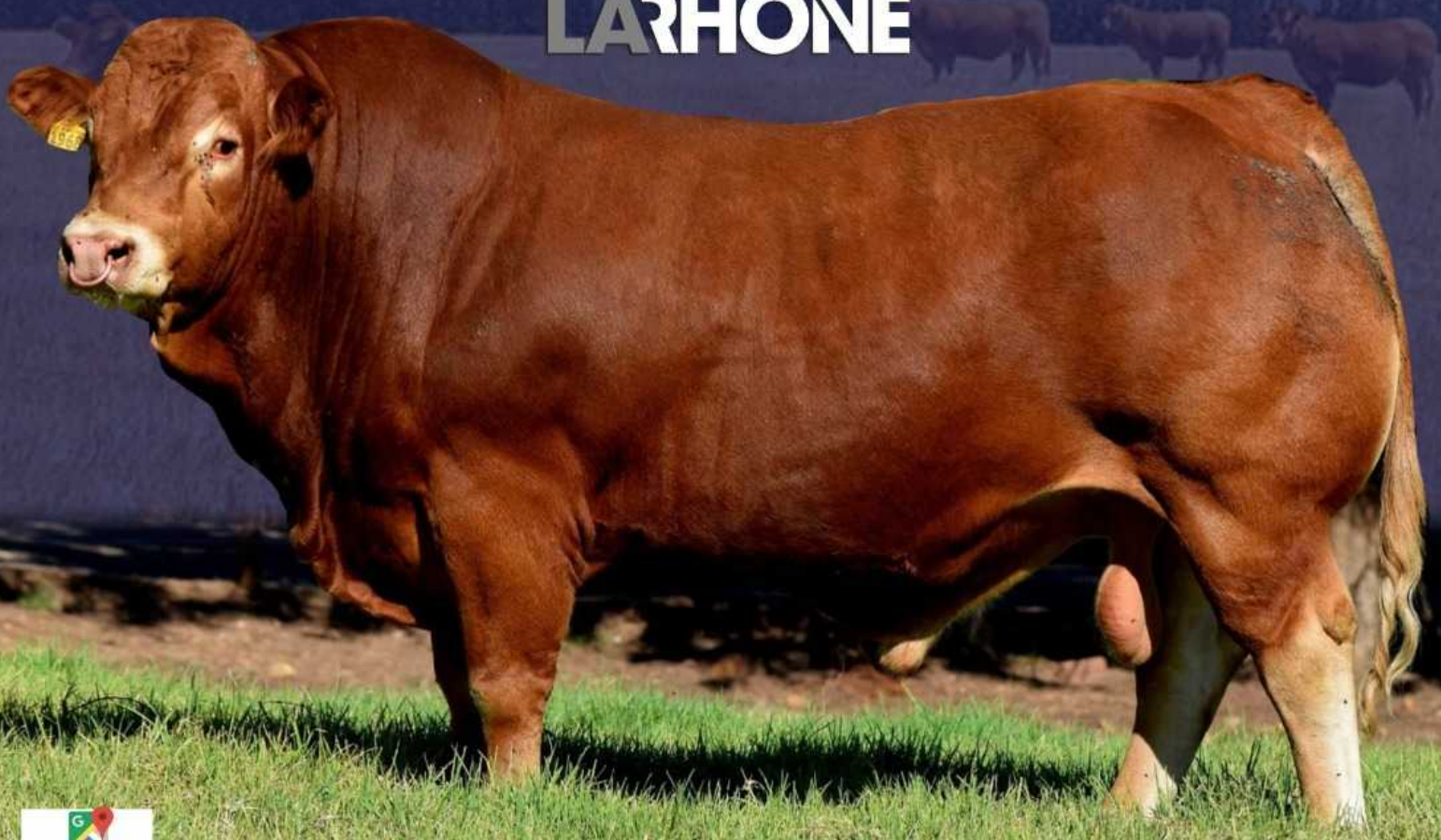
Additionally, FlowCentric Mining Technology offers cutting-edge dust remote monitoring services to aid farmers in managing and mitigating dust-related risks effectively. The company employs advanced technologies to assess and monitor dust levels on farms, providing valuable insights into potential problem areas and enabling proactive measures to be taken.

With accurate dust monitoring data, farmers can better understand the dynamics of dust dispersion, identify high-risk zones, and implement targeted dust suppression strategies. This proactive approach ensures a healthier working environment for farm workers and optimal conditions for crop growth, ultimately enhancing productivity and profitability.

FlowCentric Mining Technology's comprehensive solutions empower farmers to mitigate the risks associated with dust, promote sustainable agricultural practices, and pave the way for a more prosperous farming future in Africa.

To take advantage of FlowCentric Mining Technology's full-service dust suppression offerings, please contact us on WhatsApp +27 66 378 6065 or visit our website for more information <https://flowcentric-mining.com/>





LOT 12 ACAPULCO LR 1968



LOT 5

WOOHOO LR1790 - SA Senior Champion Cow

**SATURDAY 26 AUGUST 2023
12:00 | LA RHONE, TULBAGH**

ON OFFER: • 60 Bulls • 80 Stud Females

- 🌿 **Largest Limousin Auction** in SA.
- 🌿 **Most SA Champions ever offered** at a Limousin Auction.
- 🌿 **SA Breeder of Champions** at 6 consecutive National Shows.

FREE TRANSPORT IN SA



ENQUIRIES:
AJ du Toit 072 377 3792
Dirk Odendaal (Vleissentraal) 072 493 9989



Worth and value above price and perception

A U C T I O N S & E V E N T S

15 July 11:00 Afridome | Parys National Boran Auction [Read more](#)

20 July 11:00 Paardefontein, Standerton On Top Droughtmasters Production Auction [Read more](#)

1 August 11:00 Farm Uithoek, Villiers Rocky Droughtmasters, Production Auction [Read more](#)

2 August 11:00 Vova Droughtmaster Sale [Read more](#)

2 August 11:00 Strydfontein, Aliwal Noord Valley Droughtmasters [Read more](#)

5 August 11:00 The Bull Ring Auction House, Ermelo/ Davel Hurwits Production Auction [Read more](#)

5 August 11:00 Bona Bona, N 12 Overvaal Ile De France Club Auction [Read more](#)



A U C T I O N S & E V E N T S

9-12 Julie 11:00 Diamant Vallei Estate Kragdag [Read more](#)

17 August 11:00 Vastrap Farm Vastrap Boran Production Auction [Read more](#)

19 Augustus 11:00 Afridome, Parys Droughtmaster National Auction [Read more](#)

19 Augustus 11:00 Fire and Wine Area, Pretoria Jakaranda Ile De France Auction [Read more](#)

23 Augustus 11:00 Skeefkop, Clocolan Durow Sussex & Droughtmaster 27th Production Auction [Read more](#)

26 Augustus 11:00 La Rhone, Tulbach LaRhone Auction [Read more](#)



